



FIBERGLASS GUY STRAIN INSULATORS

16,000 Pound Rating: Clevis & Thimble Eye



Material Specifications

End Fitting

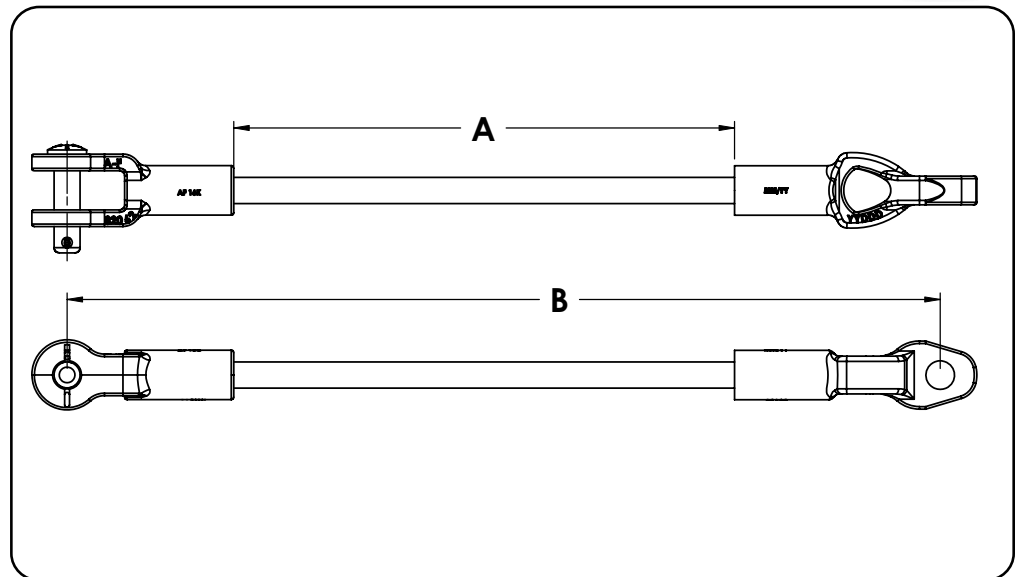
- 65-45-12 Ductile Iron, hot-dipped galvanized per ASTM A153

Fiberglass Rod

- Super-Smooth, proprietary veiled gray polyester rod with added ultraviolet protection

Minimum Ultimate Strength Rating

- 16,000 pounds



Catalog Name	Strength, lbs.	Length "A", inches ¹	Length "B", inches	1st End Fitting	2nd End Fitting	Weight, lbs
FGS16-12CT	16,000	12	20.9	Clevis	Thimble Eye	3.2
FGS16-18CT	16,000	18	26.9	Clevis	Thimble Eye	3.3
FGS16-24CT	16,000	24	32.9	Clevis	Thimble Eye	3.4
FGS16-36CT	16,000	36	44.9	Clevis	Thimble Eye	3.7
FGS16-42CT	16,000	42	50.9	Clevis	Thimble Eye	3.8
FGS16-54CT	16,000	54	62.9	Clevis	Thimble Eye	4.1
FGS16-60CT	16,000	60	68.9	Clevis	Thimble Eye	4.2
FGS16-78CT	16,000	78	86.9	Clevis	Thimble Eye	4.6
FGS16-96CT	16,000	96	104.9	Clevis	Thimble Eye	5.0
FGS16-120CT	16,000	120	128.9	Clevis	Thimble Eye	5.6
FGS16-144CT	16,000	144	152.9	Clevis	Thimble Eye	6.1

Notes:

1. Custom lengths available, contact factory or local sales representatives